

Revisions:

1	DRC COMMENTS 08.20.2025
2	DRC COMMENTS 11.26.2025

OWNER / DEVELOPER:
**RED LINK MANAGEMENT
CORP**2750 NE 185TH ST. #304
AVENTURA, FLORIDA 33180PROJECT:
**FOLIO 4942-03-27-0012
PROPOSED SHELL BLDG @
2100 WEST ATLANTIC BLDG**2100 W ATLANTIC BLVD
POMPANO BEACH, FLORIDA 33069

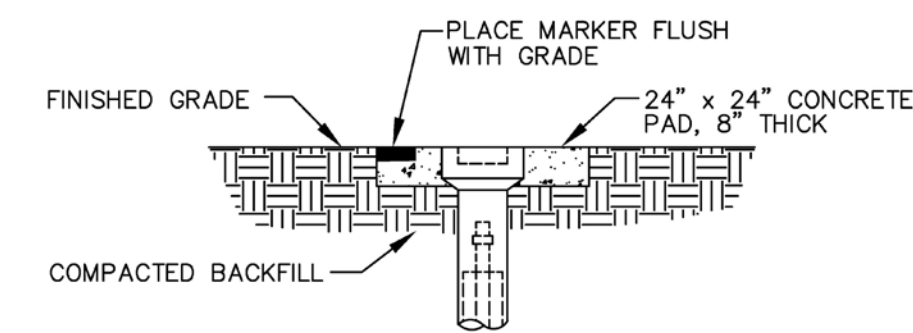
Job Number: 24109.01

File name:
Issued Date: 04-23-2025
Drawn by: A.S
Checked by: T.R.

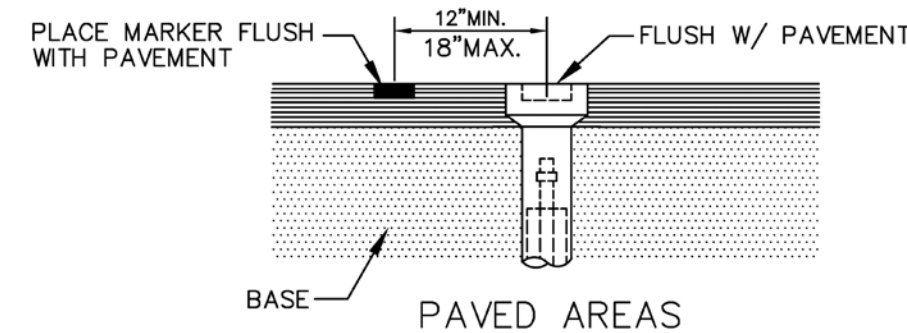
SHEET NAME

**WATER &
SEWER
DETAILS**

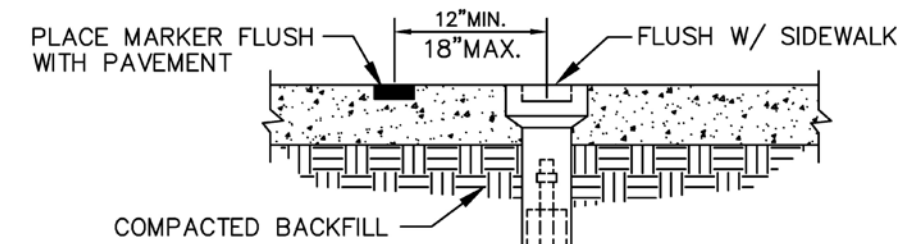
SHEET NUMBER

C-3.1

UNPAVED AREAS



PAVED AREAS

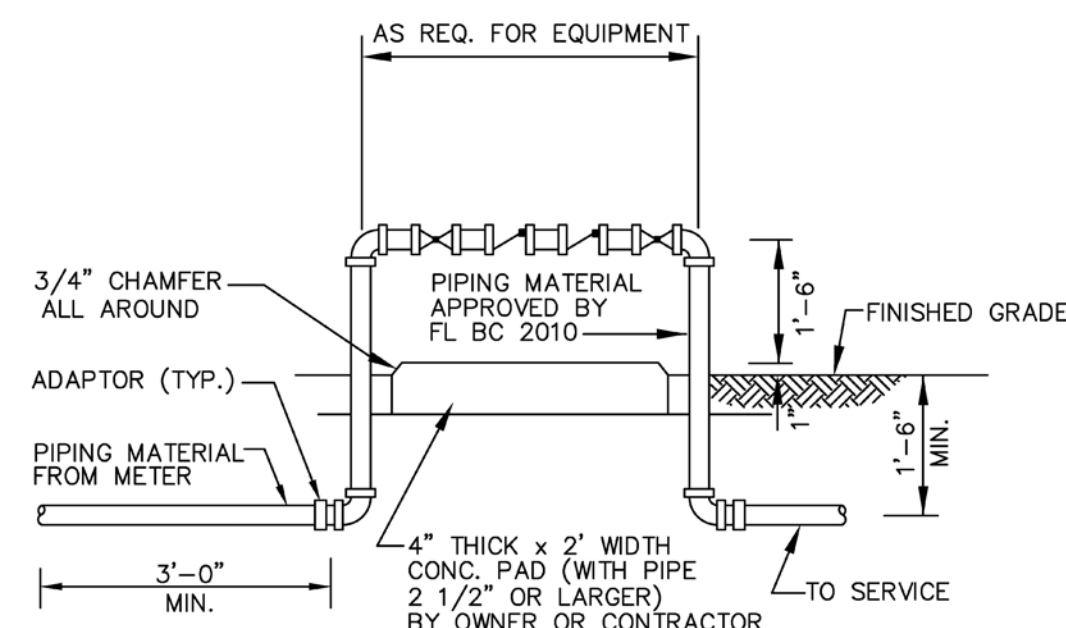


ON SIDEWALKS

VALVE BOX SETTINGS

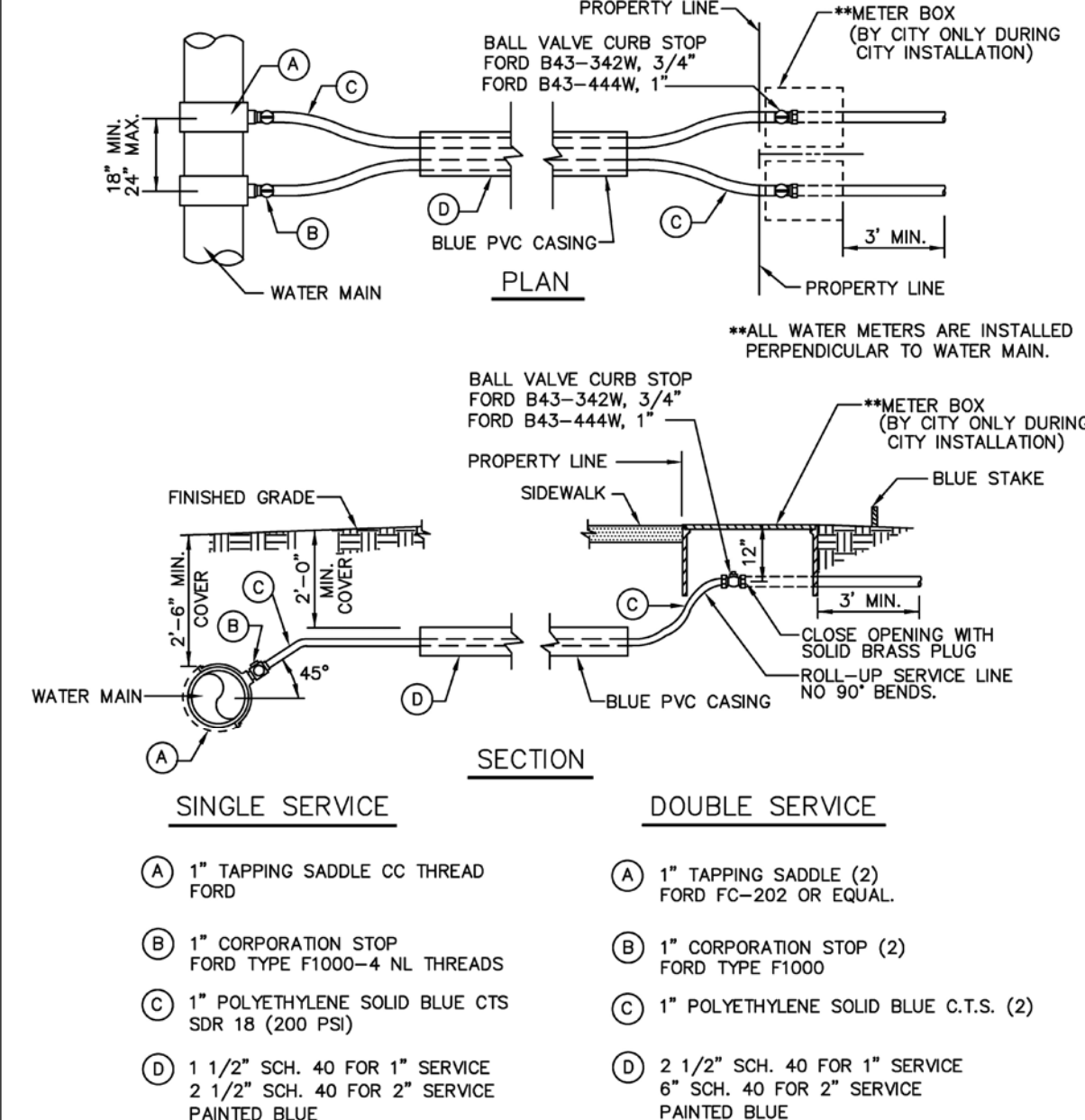
ENGINEERING STANDARDS 2025

REVISIONS	BY	DATE	ENGINEERING DIVISION	VALVE BOX SETTINGS
	S.S.	04-2005	CITY OF POMPAÑO BEACH	
				DATE: MAY 2022 DWG. NO. 102-1
			SCALE: N.T.S.	

**BACKFLOW PREVENTER**USE MEGALUGS AT ALL PIPE JOINTS 3" AND LARGER
PLEASE SEE METER INSTALL DIMENSION LIST ON STANDARD NO. 106-4
SMALL UNITS UNI-STRUT SUPPORT

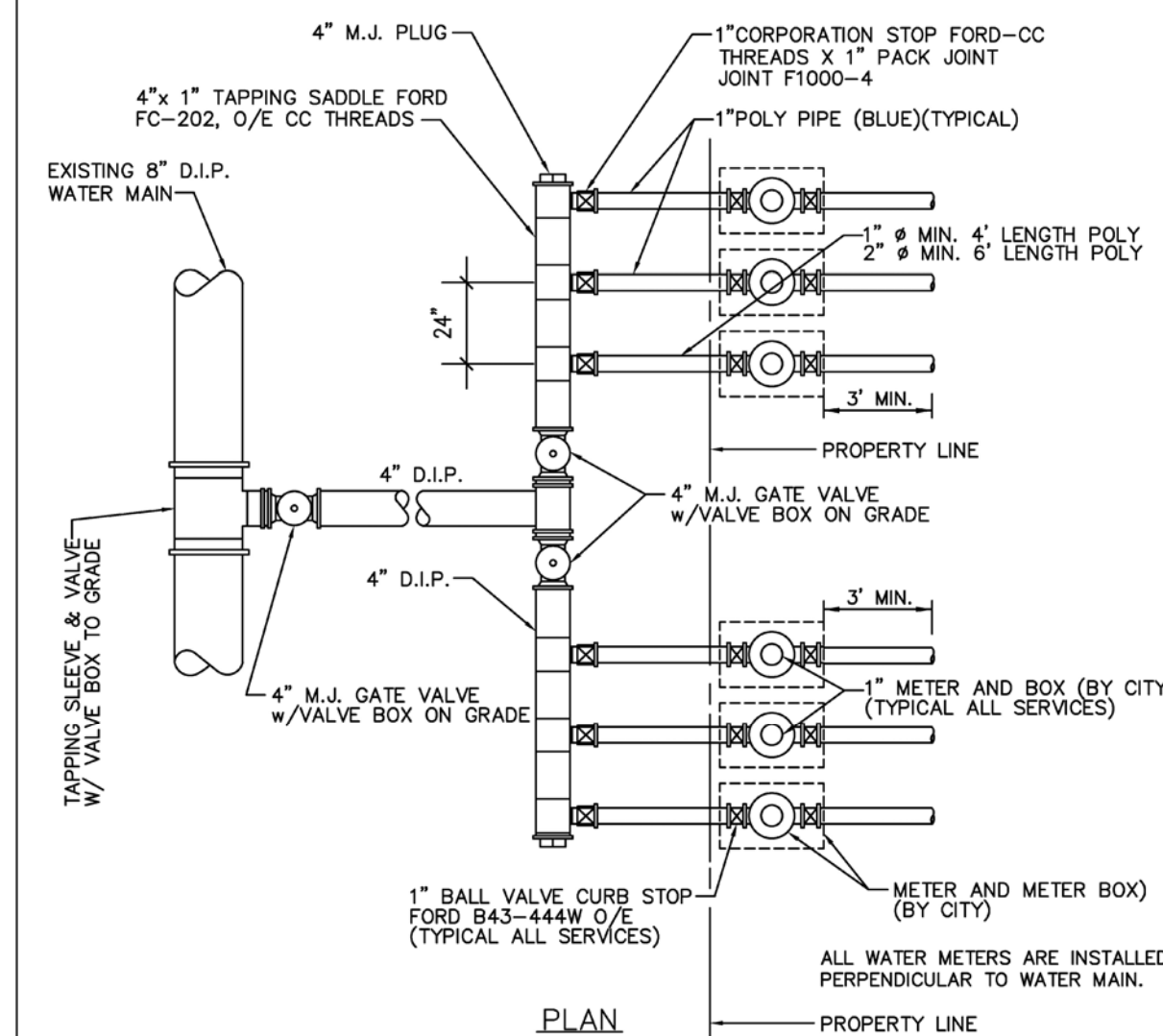
ENGINEERING STANDARDS 2025

REVISIONS	BY	DATE	ENGINEERING DIVISION	BACKFLOW PREVENTER
	T.W.	04-2008	CITY OF POMPAÑO BEACH	
	S.S.	03-2009		
	S.S.	11-2012		DATE: MAY 2022 DWG. NO. 106-1
	S.S.	01-2013	SCALE: N.T.S.	

**TYPICAL 3/4" AND 1" WATER SERVICE**

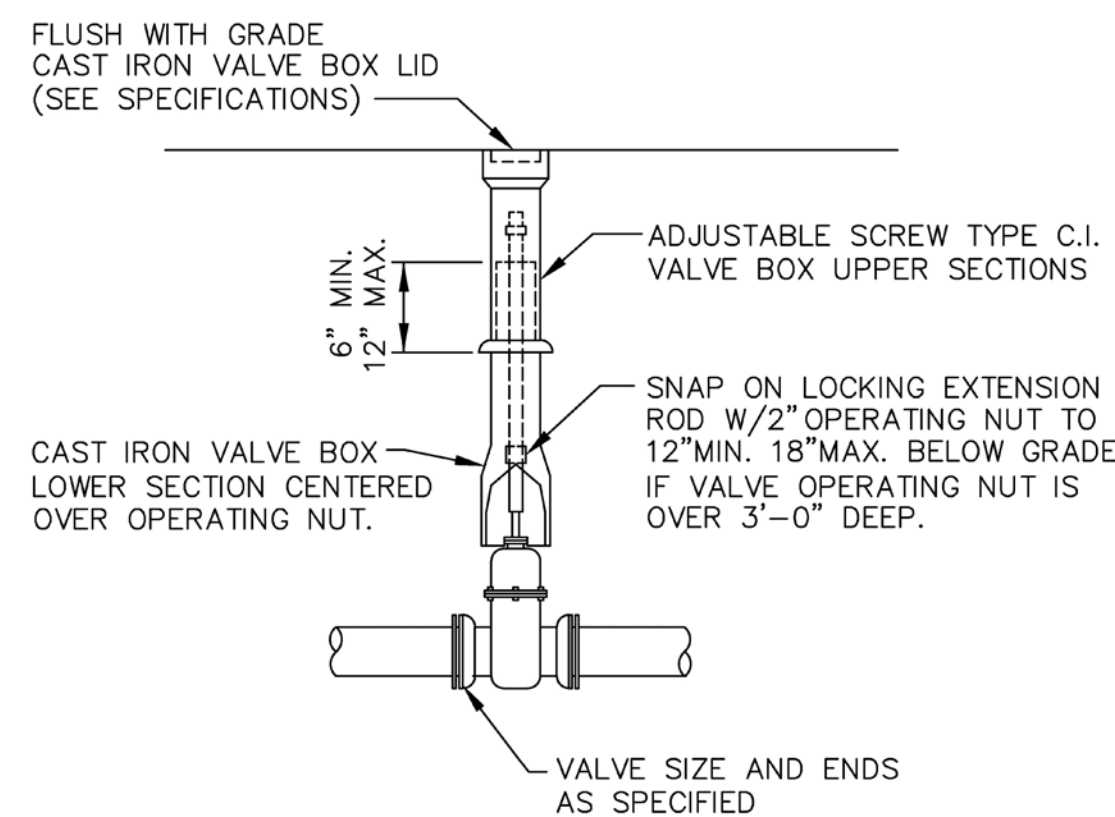
ENGINEERING STANDARDS 2025

REVISIONS	BY	DATE	ENGINEERING DIVISION	TYPICAL 1" WATER SERVICE
	T.W.	11-2007	CITY OF POMPAÑO BEACH	
	S.S.	05-2012		
	S.S.	11-2015		DATE: MAY 2022 DWG. NO. 107-1
	A.S.	08-2021	SCALE: N.T.S.	

**TYPICAL METER BANK**USE MEGALUGS AT ALL PIPE JOINTS
ALL D.I.P. TO BE PAINTED BLUE
ON THE TOP HALF OF PIPE.

ENGINEERING STANDARDS 2025

REVISIONS	BY	DATE	ENGINEERING DIVISION	TYPICAL METER BANK
	T.W.	02-09	CITY OF POMPAÑO BEACH	
	S.S.	05-2011		
	S.S.	11-2012		DATE: MAY 2022 DWG. NO. 113-1
			SCALE: N.T.S.	

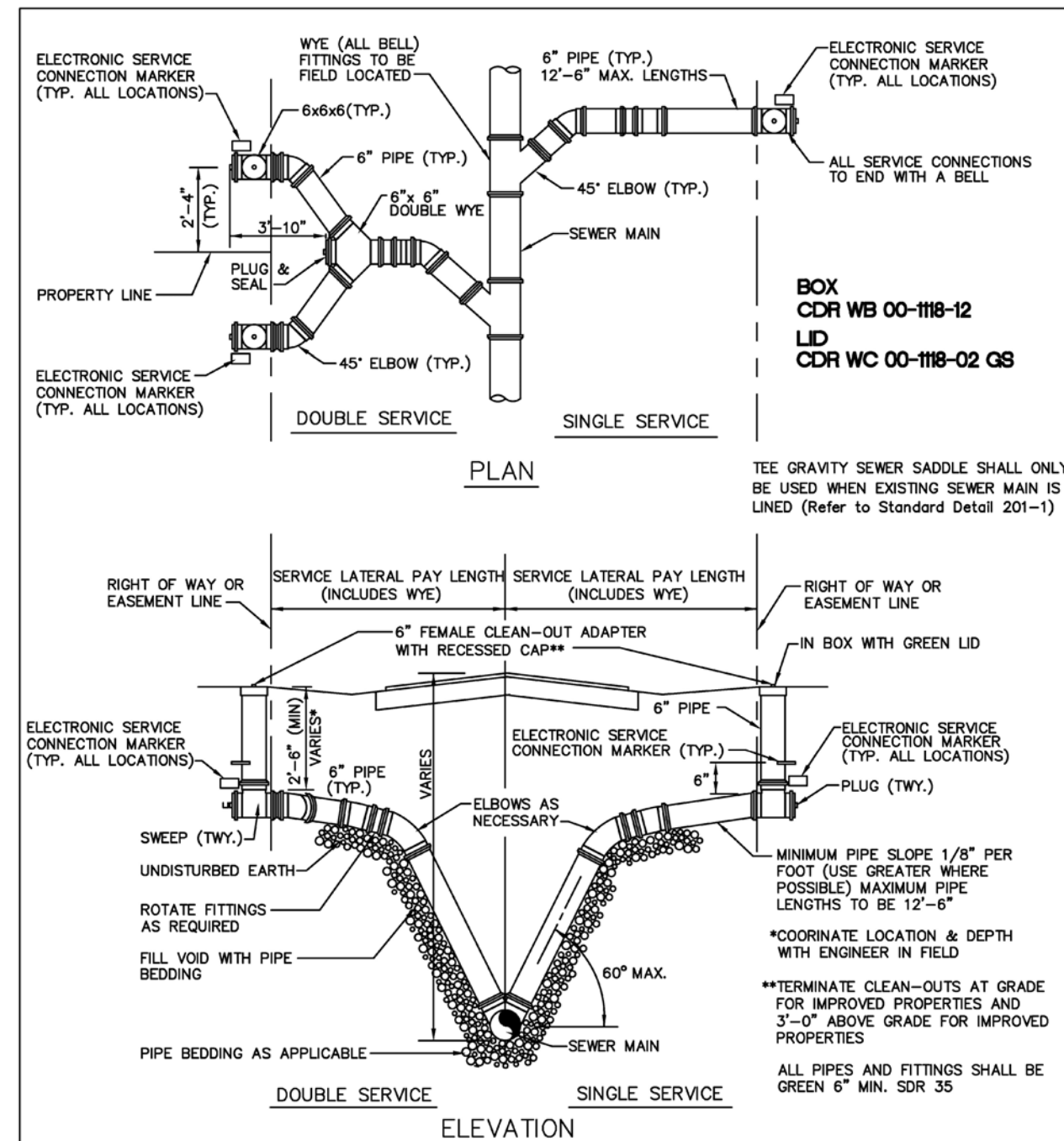
**GATE OR PLUG VALVE SETTING**

USE MEGALUGS AT ALL PIPE JOINTS

ALL D.I.P. TO BE PAINTED
BLUE ON TOP HALF OF PIPE.

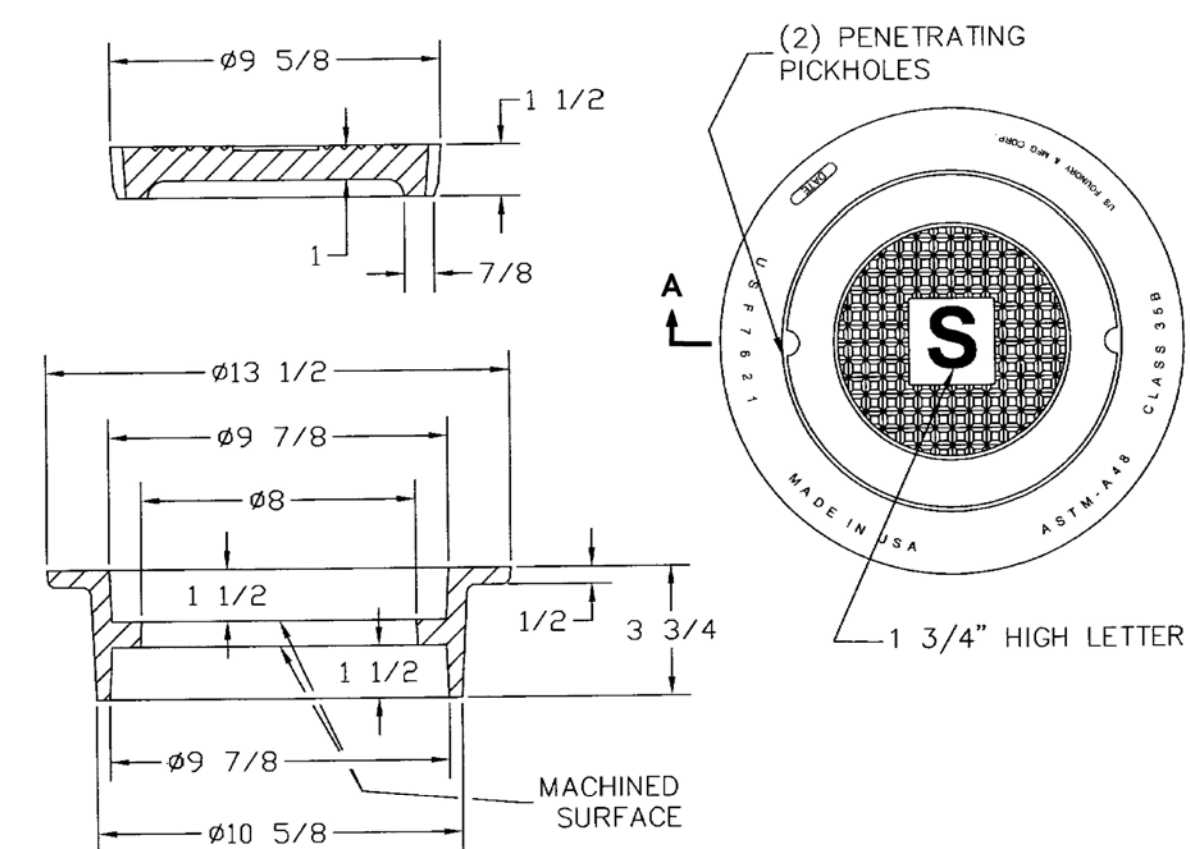
ENGINEERING STANDARDS 2025

REVISIONS	BY	DATE	ENGINEERING DIVISION	GATE OR PLUG VALVE SETTINGS
	S.S.	04-2005	CITY OF POMPAÑO BEACH	
	T.W.	11-2007		
			SCALE: N.T.S.	DATE: MAY 2022 DWG. NO. 103-1

**SERVICE LATERALS WITH RISERS**

ENGINEERING STANDARDS 2025

REVISIONS	BY	DATE	ENGINEERING DIVISION	SERVICE LATERALS
	T.W.	11-2007	CITY OF POMPAÑO BEACH	
	S.S.	01/27/12		
	S.S.	07/10/12		DATE: JUNE 2022 DWG. NO. 200-1
	S.S.	02/05/16	SCALE: N.T.S.	

**SEWER BOX AND COVER - HEAVY TRAFFIC**

ENGINEERING STANDARDS 2025

REVISIONS	BY	DATE	ENGINEERING DIVISION	SEWER BOX AND COVER HEAVY TRAFFIC
	S.S.	12/06/18	CITY OF POMPAÑO BEACH	
			SCALE: N.T.S.	DATE: JUNE 2022 DWG. NO. 210-3

This item has been digitally signed and sealed by
John E Flynn, PE on the date adjacent to the seal.Printed copies of this document are not
considered signed and sealed and the signature
must be verified on any electronic copies.**GRACE
ENGINEERING**

Civil Engineering Consultants

17110 SW 64th Court
Southwest Ranches, Florida 33331GraceEngineeringLLC@gmail.com
754.200.4534JOHN E. FLYNN, P.E.
Florida License No. 63816
GRACE ENGINEERING, LLC
Certificate of Authorization No. 29280

11/26/2025

P225-1200002

05/27/2026